

OXFORD CAMBRIDGE AND RSA EXAMINATIONS

Monday 11 November 2019 – Afternoon

GCSE (9–1) Mathematics

J560/06 Paper 6 (Higher Tier)

**Time allowed: 1 hour 30 minutes
plus your additional time allowance**

YOU MUST HAVE:

Insert for Question 7

YOU MAY USE:

a scientific or graphical calculator

geometrical instruments

tracing paper

A model for Question 8

Please write clearly in black ink.

Centre number

--	--	--	--	--

Candidate number

--	--	--	--

First name(s) _____

Last name _____

READ INSTRUCTIONS OVERLEAF



INSTRUCTIONS

Use black ink. You may use an HB pencil for graphs and diagrams.

Answer ALL the questions.

Read each question carefully before you start to write your answer.

Where appropriate, your answers should be supported with working. Marks may be given for a correct method even if the answer is incorrect.

Write your answer to each question in the space provided.

If additional space is required, use the lined page(s) at the end of this booklet. The question number(s) must be clearly shown.

INFORMATION

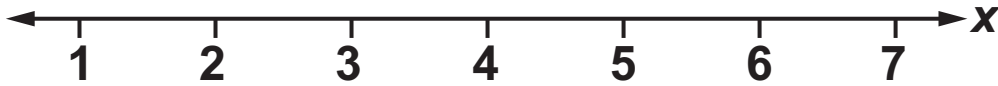
The total mark for this paper is 100.

The marks for each question are shown in brackets [].

Use the π button on your calculator or take π to be 3.142 unless the question says otherwise.

Answer ALL the questions.

- 1 Solve $3x - 5 \geq 10$.
Show your solution on the number line. [4]**



- 2 Amrit's income is 32% more than Bethan's income.
Amrit and Bethan's combined income is £54 868.**

Calculate Amrit's income.

£ _____ [5]

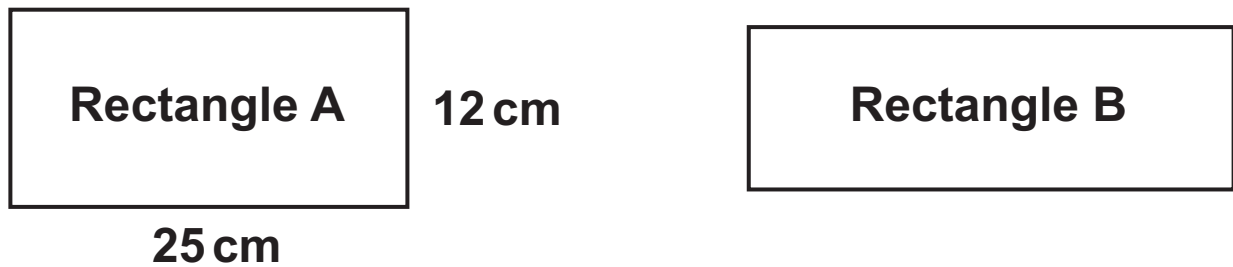
- 3 Jacob, Amelie and Reuben each roll a fair six-sided dice.
What is the probability that all three roll a number less than 3?**

Give your answer as a fraction in its simplest form.

_____ **[3]**

4 The diagram shows two rectangles, A and B.

NOT TO SCALE



Rectangle A has a width of 25 cm and a height of 12 cm.

The width of rectangle B is three times the height of rectangle B.

The area of rectangle A is equal to the area of rectangle B.

Find the perimeter of rectangle B.

_____ cm [5]

- 5 Kay invests £1500 in an account paying 3% COMPOUND interest per year.
Neil invests £1500 in an account paying $r\%$ SIMPLE interest per year.**

At the end of the 5th year, Kay and Neil's accounts both contain the same amount of money.

Calculate r .

Give your answer correct to 1 decimal place.

$$r = \underline{\hspace{2cm}} [6]$$

- 6 The table shows the children nominated to win the subject prize in Mathematics and the subject prize in English.**

Mathematics	English
Alice	Alice
Ben	Claire
Emma	Gabi
Paddy	Simon

**The winner of each subject prize is picked at random.
It is possible for Alice to win both prizes.**

In what percentage of the combinations of prize winners does Alice win AT LEAST one prize?

_____ % [4]

7 (a) Complete the table for $y = x^2 - 4x + 1$. [2]

x	-1	0	1	2	3	4	5
y		1			-2		6

(b) In the insert draw the graph of $y = x^2 - 4x + 1$ for $-1 \leq x \leq 5$. [3]

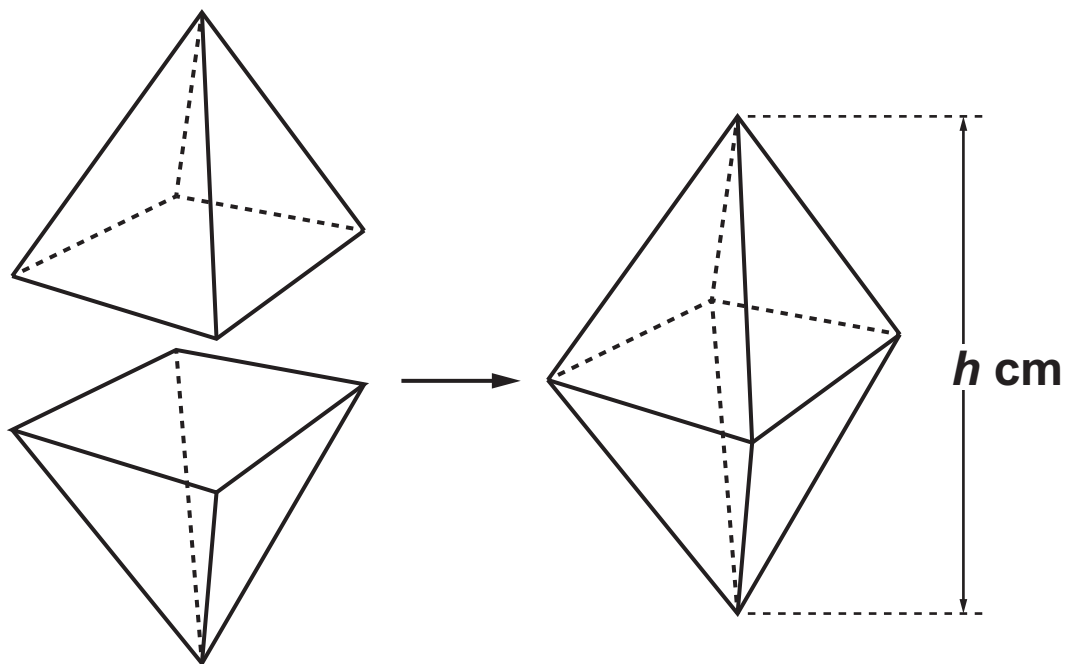
(c) On the same grid in the insert, draw the graph of $y = 2x - 6$ for $-1 \leq x \leq 5$. [3]

(d) Use your graphs to solve the equation
 $x^2 - 4x + 1 = 2x - 6$.

Give your answers to 1 decimal place.

(d) $x =$ _____ or $x =$ _____ [2]

- 8 An octahedron is formed from two identical square based pyramids.
The square bases are stuck together as shown.
You may use models to help you.



The volume of the octahedron is 60 cm^3 .
The length of the side of each pyramid's square base is 5 cm.

Work out the height h cm of the OCTAHEDRON.

[The volume of a pyramid is

$\frac{1}{3} \times \text{area of base} \times \text{perpendicular height}$]

$h =$ _____ cm [4]

9 Vector $\mathbf{a} = \begin{pmatrix} 3 \\ -1 \end{pmatrix}$ and vector $\mathbf{b} = \begin{pmatrix} 1 \\ 3 \end{pmatrix}$.

(a) Find the values of k and n so that

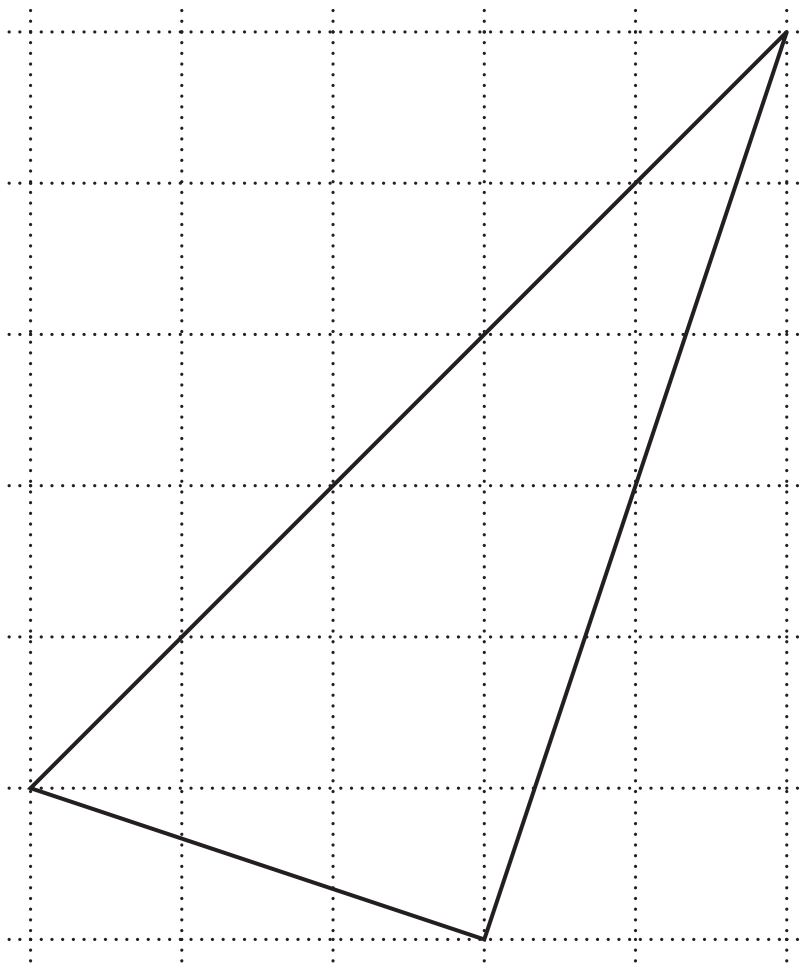
$$k(\mathbf{a} + \mathbf{b}) = \begin{pmatrix} 10 \\ n \end{pmatrix}.$$

(a) $k =$ _____

$n =$ _____ [3]

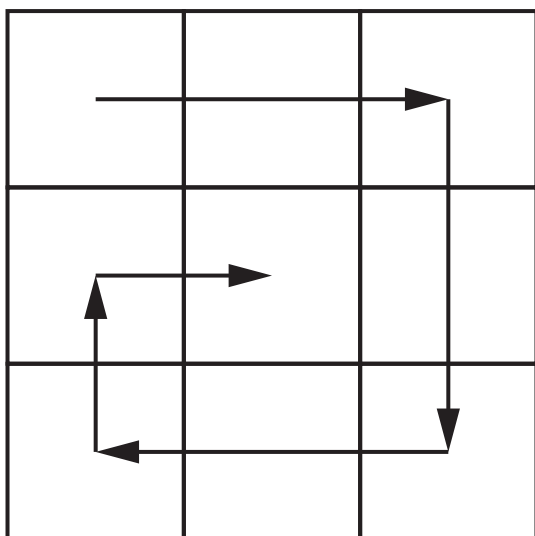
(b) Gavin starts to draw a diagram to show that

$$a + 2b = \begin{pmatrix} 5 \\ 5 \end{pmatrix}.$$



Complete Gavin's diagram. [3]

- 10 Nine consecutive numbers are written on a 3-by-3 grid. They are arranged, in ascending order, in a spiral as shown.



(a) Karen writes the numbers 3 to 11 on her grid.

3	4	5
10	11	6
9	8	7

The total of the first column is $3 + 10 + 9 = 22$.

Karen says

The total of the first column is one less than the total of the second column.

Show that this is correct for Karen's grid. [1]

(b) Victor says

If ANY nine consecutive numbers are arranged in ascending order in this spiral on a 3-by-3 grid, the total of the first column will ALWAYS be one less than the total of the second column.

Prove that Victor is correct. [5]

BLANK PAGE

11 A sequence is defined by the rule $u_{n+1} = 5u_n - 15$.

(a) If $u_3 = 6$, calculate

(i) u_5

(a)(i) $u_5 =$ _____ [3]

(ii) u_2

(ii) $u_2 =$ _____ [3]

(b) Trevor says

If $u_1 = 3.75$ then $u_{100} = 3.75$

Show that Trevor is correct. [2]

- 12 (a) Arron ran a distance of 5 km at an average speed of 2.2 m/s.

How long did Arron run for?

Give your answer in minutes and seconds, to the nearest second.

(a) _____ minutes _____ seconds [4]

- (b) Claudine cycled a distance of 53 km in 2.7 hours.
The distance is measured correct to the nearest km.
The time is given correct to 1 decimal place.

Calculate the lower and upper bounds of her average speed.

Give your answers correct to 2 decimal places.

(b) lower bound = _____ km/h
upper bound = _____ km/h [6]

**13 Dani has a pack of 45 cards.
Each card is either red or black.**

One-third of the cards in the pack are RED.

She picks two cards from the pack, without replacement.

Calculate the probability that Dani picks two BLACK cards.

_____ **[5]**

14 Write $(\sqrt[4]{8})^5$ as a power of 2.

_____ [3]

15 The histogram opposite shows information about the weights of some of the parcels handled by a delivery company in one month.

(a) Zoe says

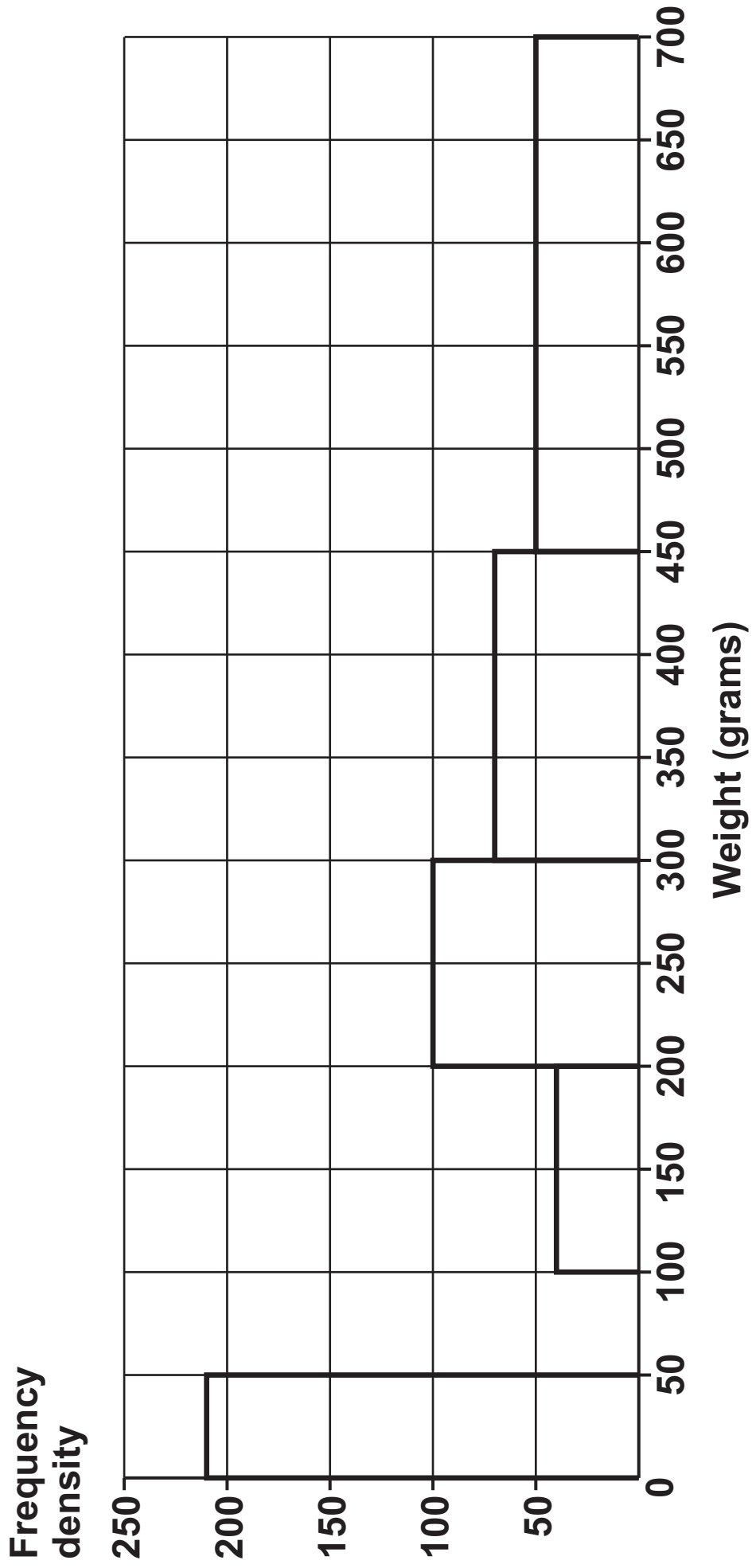
There are fewer parcels weighing between 450g and 700g than parcels weighing between 300g and 450g.

**Is Zoe correct?
Show how you decide.**

[4]

(b) The delivery company delivered 6500 parcels weighing between 50 g and 100 g.

Complete the histogram to show this information. [2]



- (c) Zoe uses the histogram to calculate the number of parcels weighing between 200 g and 250 g.

Explain why Zoe's answer is unlikely to be reliable.

[1]

BLANK PAGE

16 (a) In the diagram,

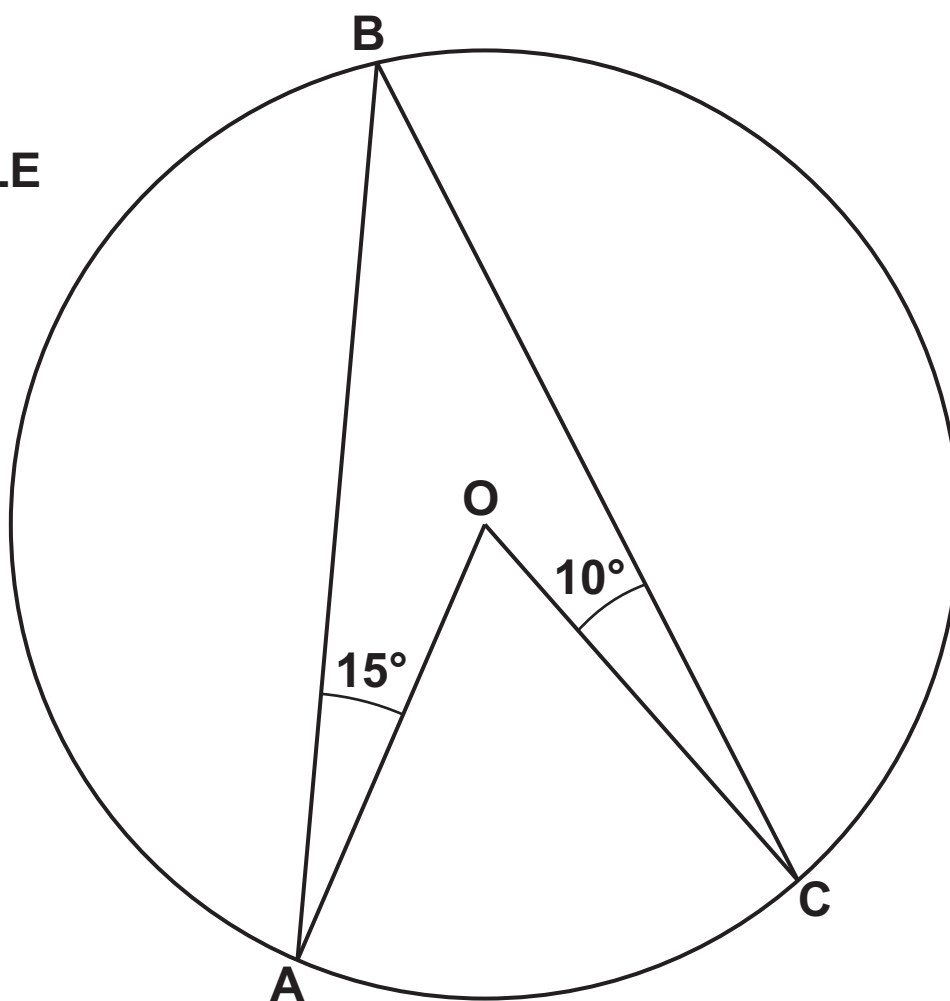
A, B and C are points on the circumference of a circle

O is the centre of the circle

angle $OAB = 15^\circ$

angle $BCO = 10^\circ$.

NOT TO SCALE



Calculate the acute angle AOC.

(a) _____° [4]

(b) In the diagram,

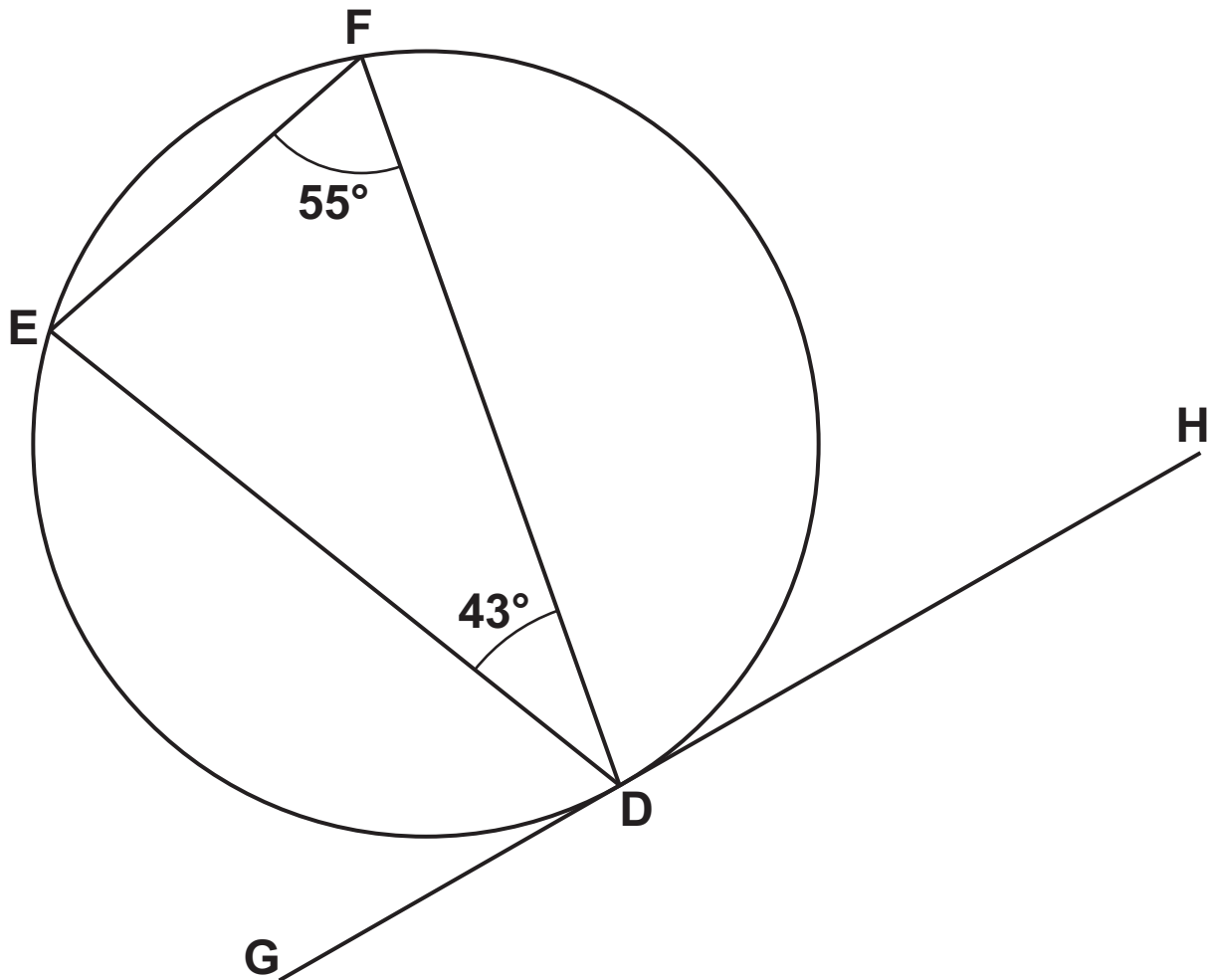
E, F and D are points on the circumference of the circle

G, D and H lie on a tangent to the circle

angle $EFD = 55^\circ$

angle $FDE = 43^\circ$.

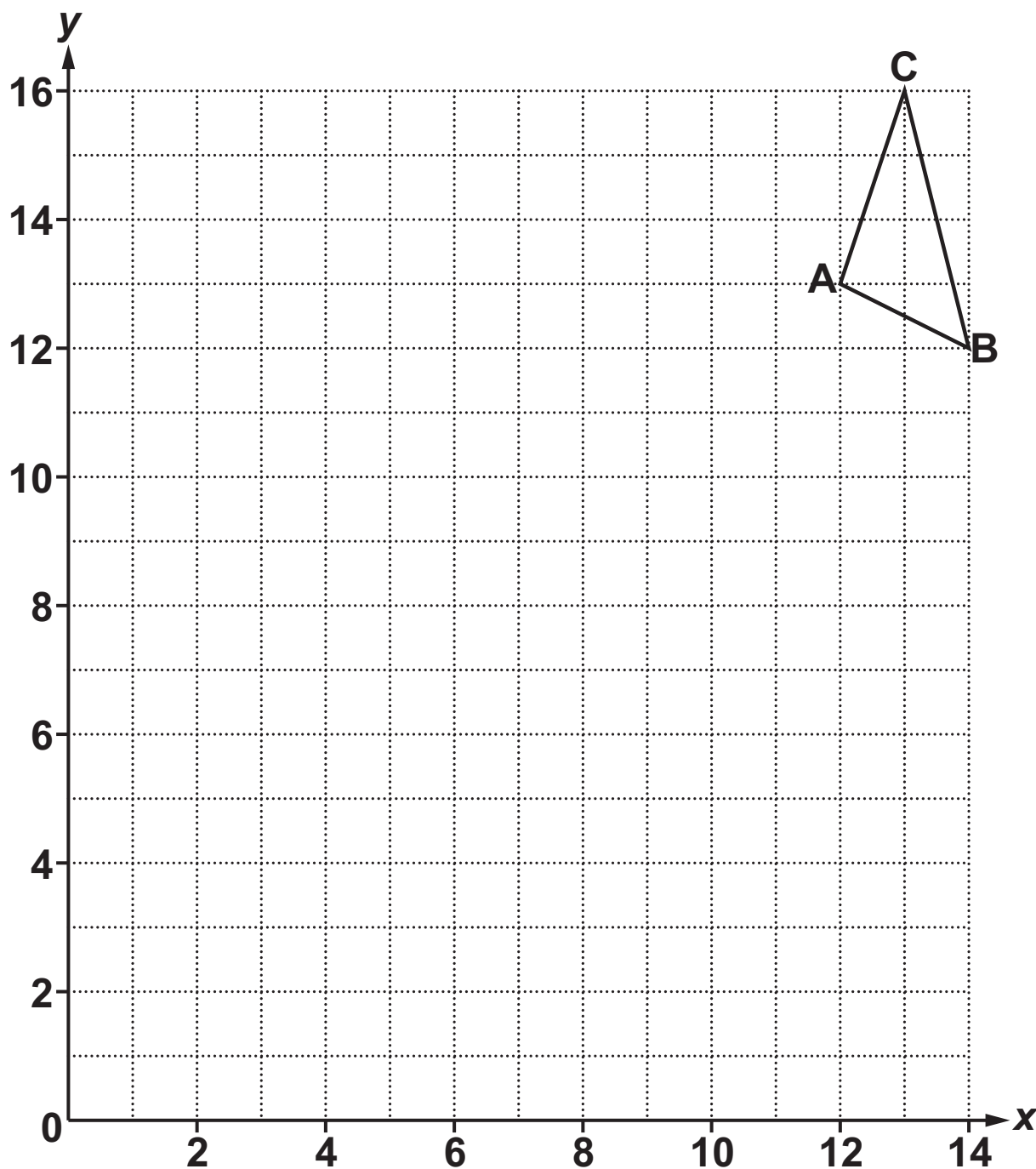
NOT TO SCALE



Explain why angle HDF is 82° .

[4]

17 A triangle has vertices A, B and C.



The triangle is enlarged with scale factor f and centre of enlargement E.

Vertex A maps to (6, 7).

Vertex B maps to (2, 9).

(a) Find the coordinates of the centre of enlargement, E.

(a) (_____ , _____) [2]

(b) Find the scale factor, f .

(b) _____ [2]

**(c) Vertex C maps to the point R.
Find the coordinates of R.**

(c) (_____ , _____) [2]

END OF QUESTION PAPER

ADDITIONAL ANSWER SPACE

If additional space is required, you should use the following lined page(s). The question number(s) must be clearly shown in the margin(s).

[illegible]

Copyright Information

OCR is committed to seeking permission to reproduce all third-party content that it uses in its assessment materials. OCR has attempted to identify and contact all copyright holders whose work is used in this paper. To avoid the issue of disclosure of answer-related information to candidates, all copyright acknowledgements are reproduced in the OCR Copyright Acknowledgements Booklet. This is produced for each series of examinations and is freely available to download from our public website (www.ocr.org.uk) after the live examination series.

If OCR has unwittingly failed to correctly acknowledge or clear any third-party content in this assessment material, OCR will be happy to correct its mistake at the earliest possible opportunity.

For queries or further information please contact The OCR Copyright Team, The Triangle Building, Shaftesbury Road, Cambridge CB2 8EA.

OCR is part of the Cambridge Assessment Group; Cambridge Assessment is the brand name of University of Cambridge Local Examinations Syndicate (UCLES), which is itself a department of the University of Cambridge.